

EVOLUTION OF A MAN CAVE CALLED THE STARBOX

**ASTRONOMY IS LIKE COFFEE – IT KEEPS YOU
UP AT NIGHT**

Kyle Coker

Orange County Astronomers 2018

Kyle's Man Cave

WARNING

OBJECTS IN TELESCOPE
ARE FARTHER
THAN THEY APPEAR

Lower Pads 2004





Lower Pads Anza

Mid 2004

- Tak TOA 130
- Losmandy G-11
- SBIG STV
- Canon 10D
- Laptop



Late 2004

- Canon 10D
- TOA 130



Aug 2005

**AP1200 GTO on
permanent Pier**

**Takahashi
TOA-130**

Canon 20Da

**STV on Borg
45ED Guide
Scope**



New Motel



Patzakis Rule

My Orthopedic Professor at USC

Never stand when you can sit
and

Never sit when you can lay
down

Wife's Corollary - Never stay awake
when you can sleep

Dec 2009



Foundation With Footings for 2 Piers





Fold down shutters
on south side

To Warming Room







Outside

Observatory



← North

South →

Fort Apache



Football Field

Anza House



Celestron C-14 and Vixen VCL-200



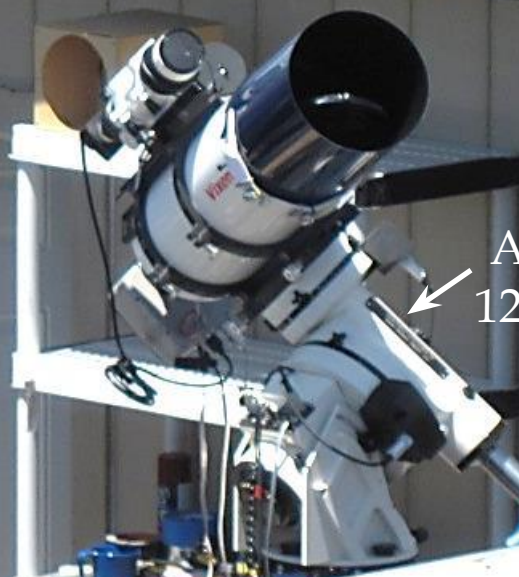
Just Need a Hot Tub



April 2010 C-14 For Viewing and Vixen VCL200 – STL11K



Losmandy
G11



AP
1200

C-14 For Viewing and Vixen VCL200 - STL11K



Warming Room - 2011



Early Control Room - 2011



Tak E-180 500 mm f/2.8 STL 11000M on AP GTO Mach 1

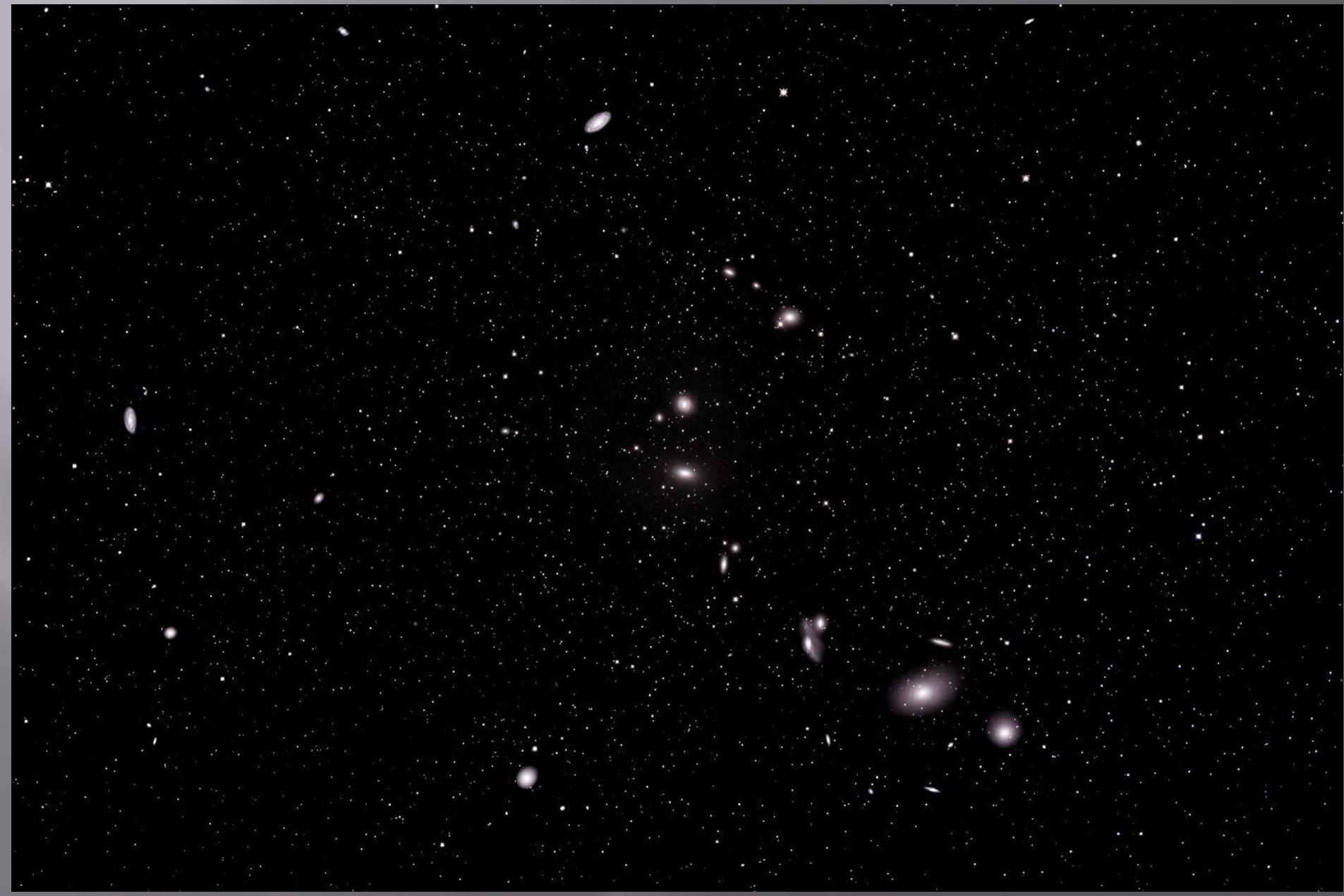


January
2011

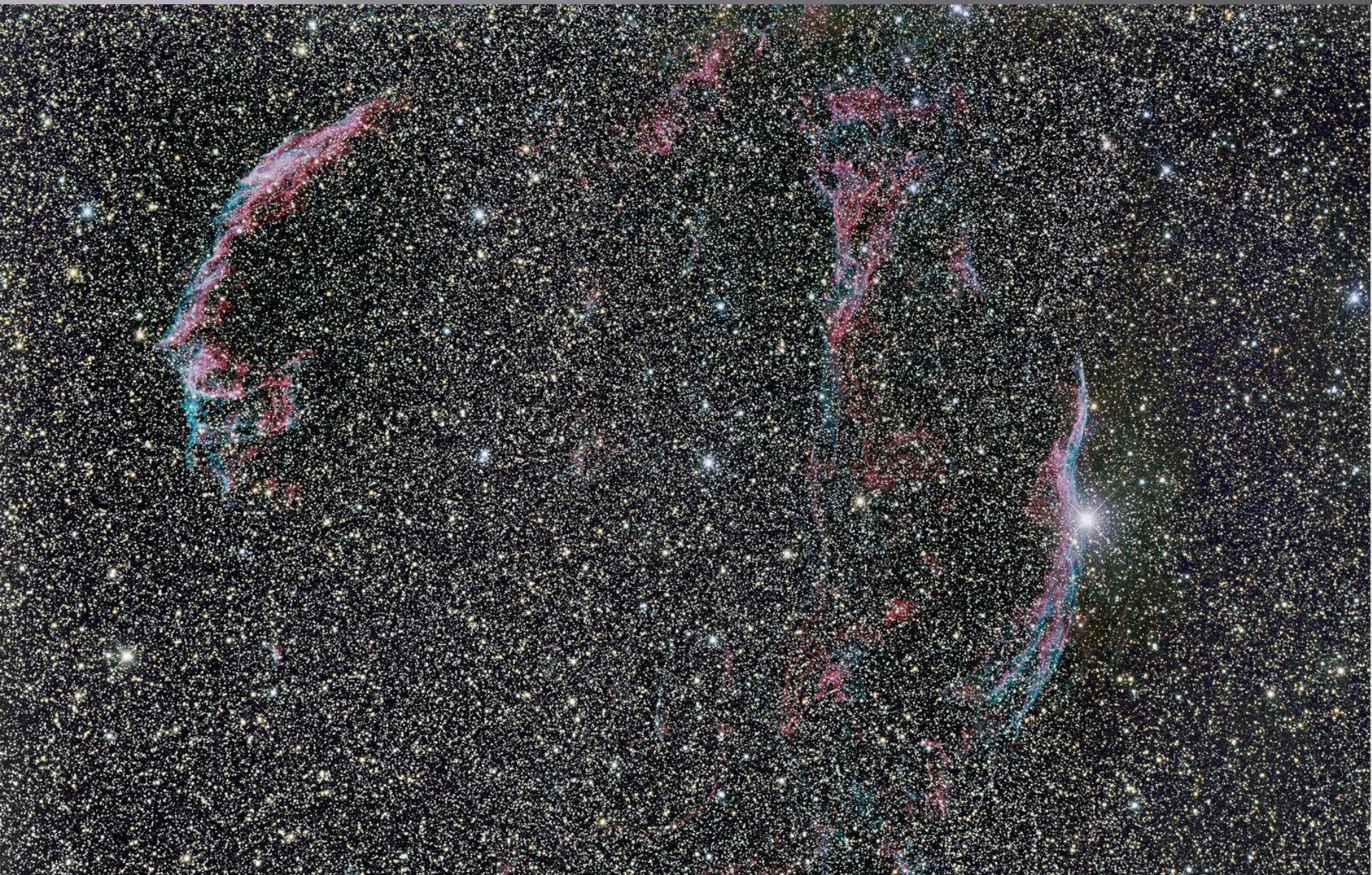
Gama Cygnus - 2011



Markarian's Chain -2011



Veil Network - 2013





VCL200 and TOA130 Tandem on AP1200



12V Winch



January 2011



January 2011

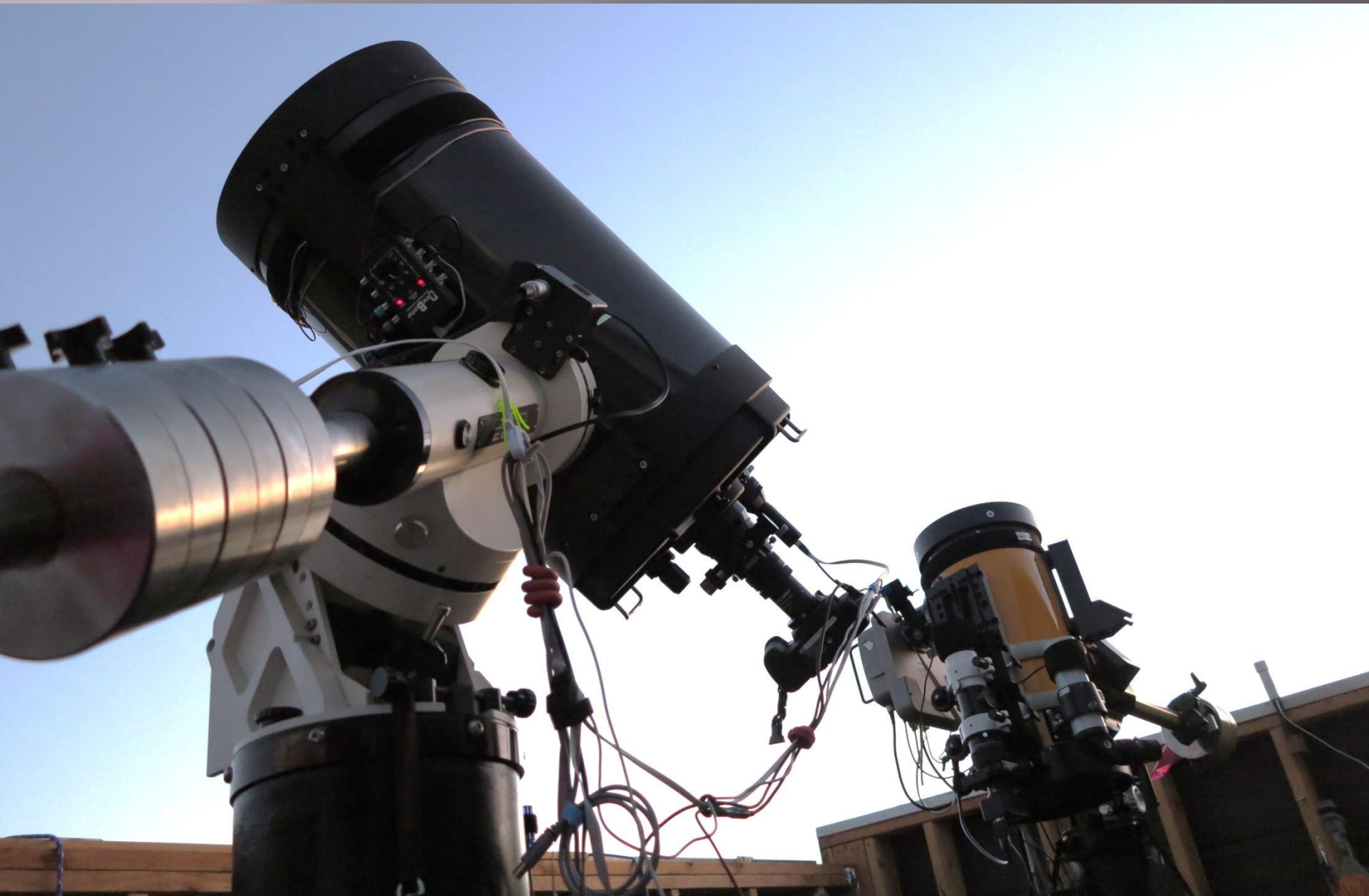


Sunsetter Motorized Awning

Celestial Wind Thingy



C14 and E-180 - 2014







M51 - C14 STL11K - 2014



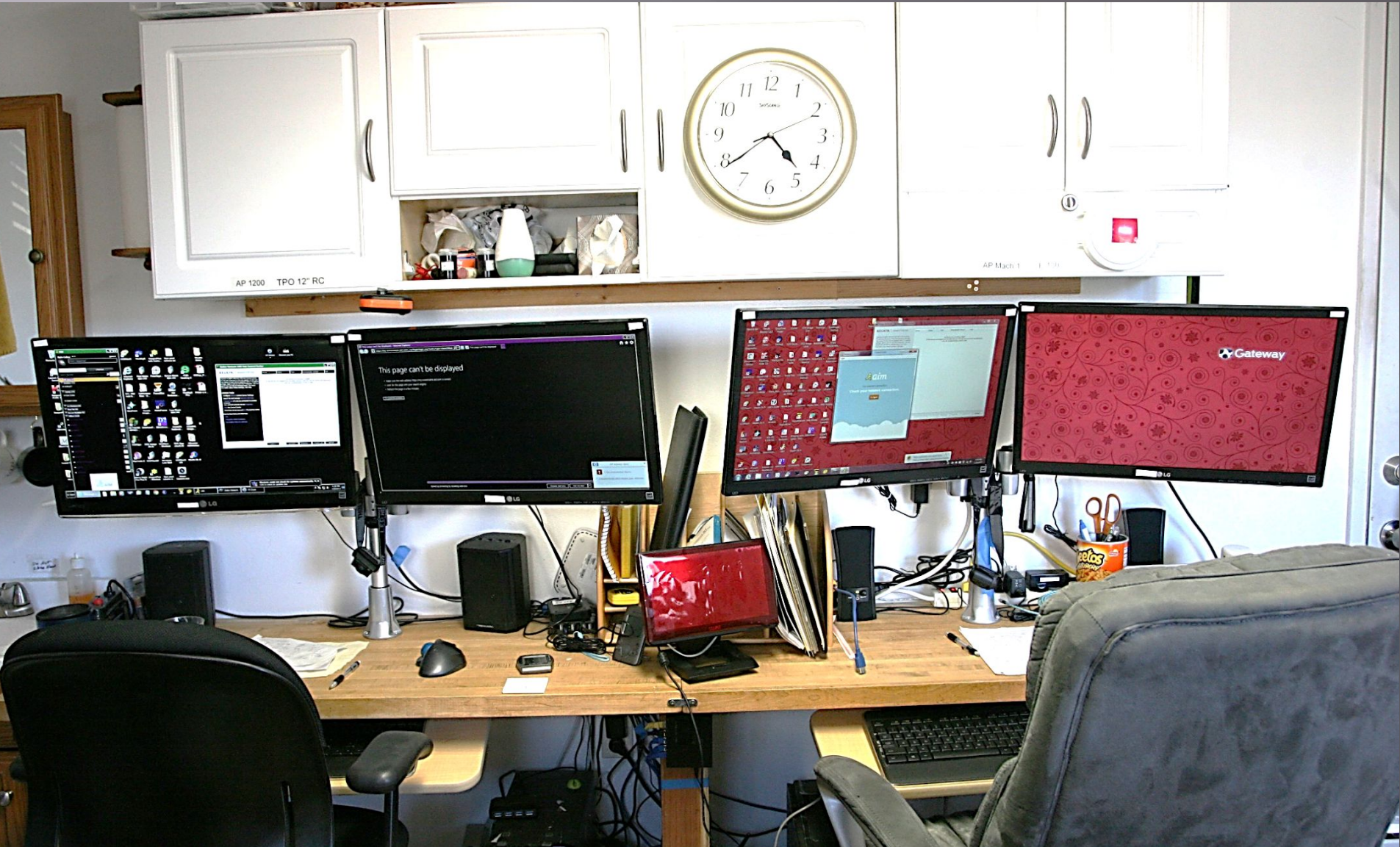
Control Room Nov 2011



Dual Telescope Control - June 2012

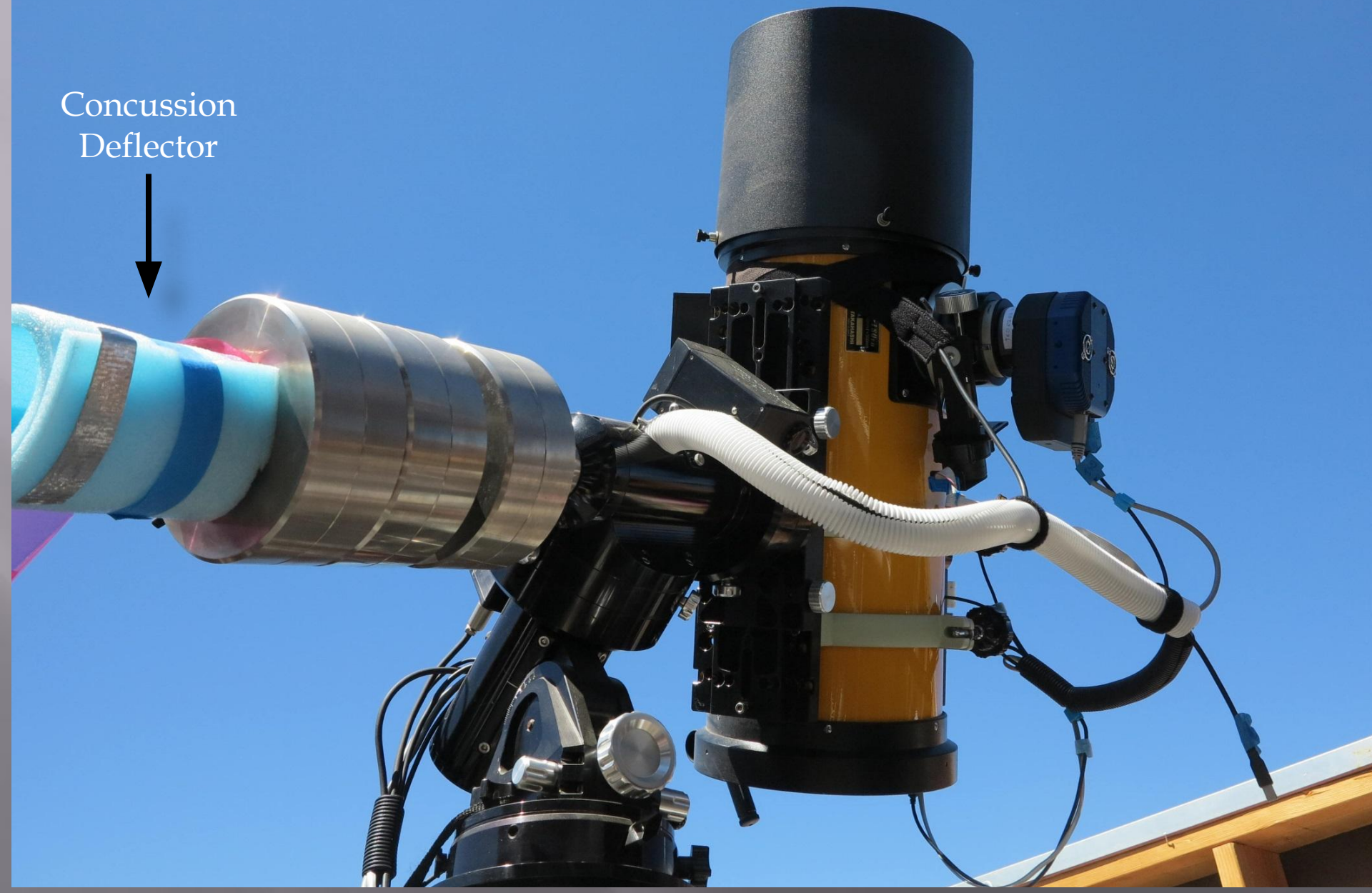


Current Control Room - 2018





Concussion
Deflector





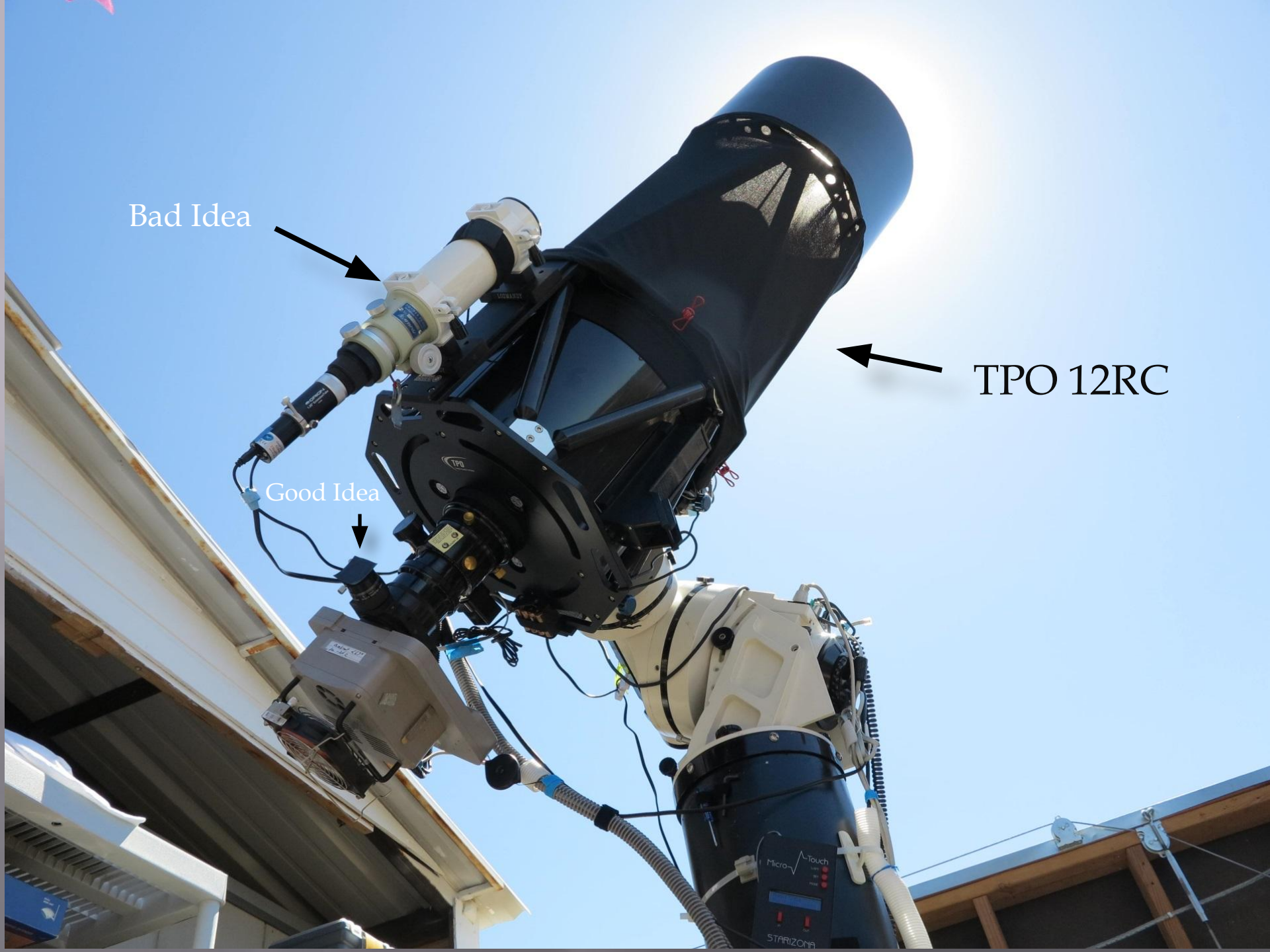
Bad Idea



TPO 12RC



Good Idea





July 2016

12V Winch

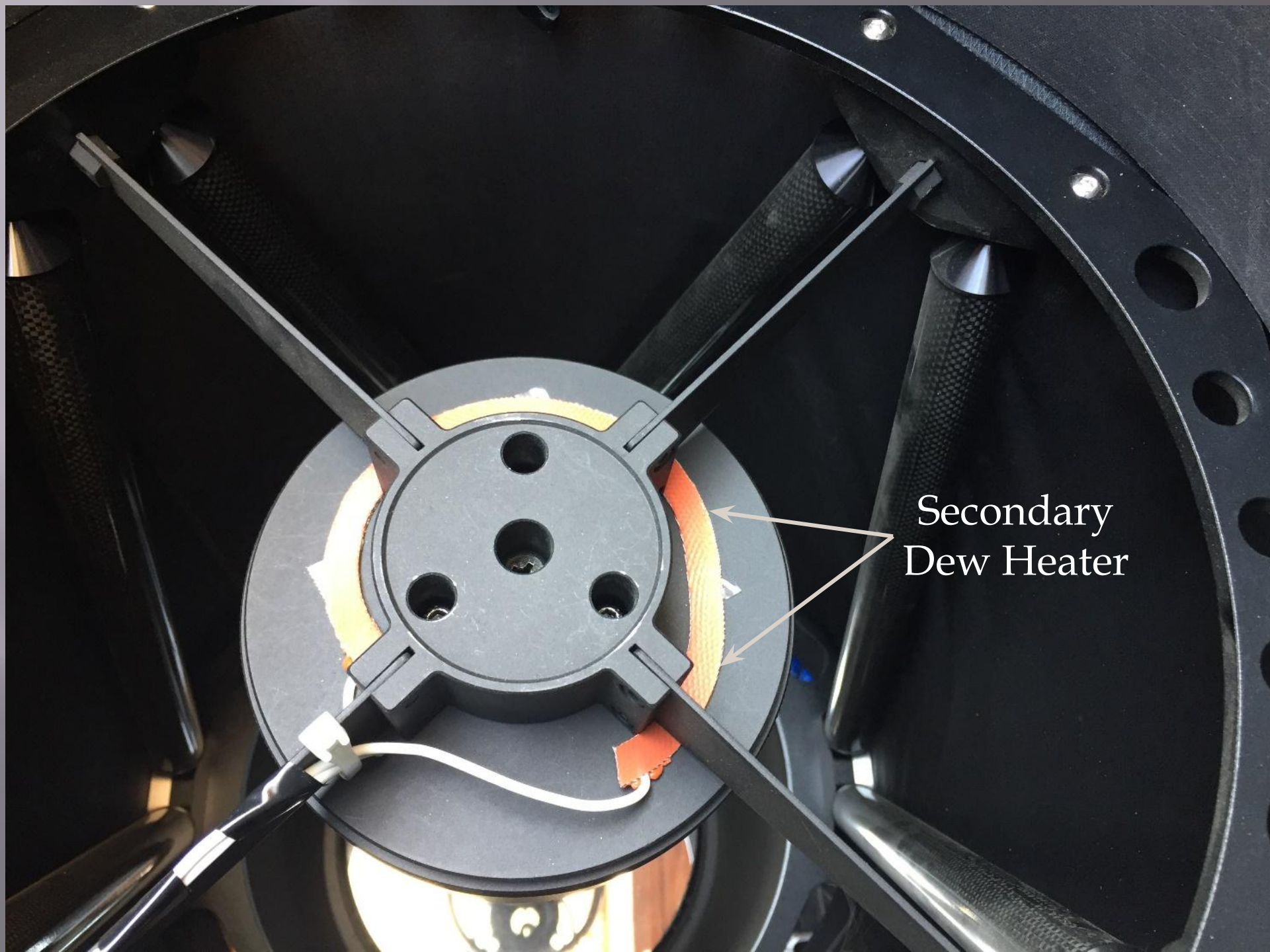


Ice Maker

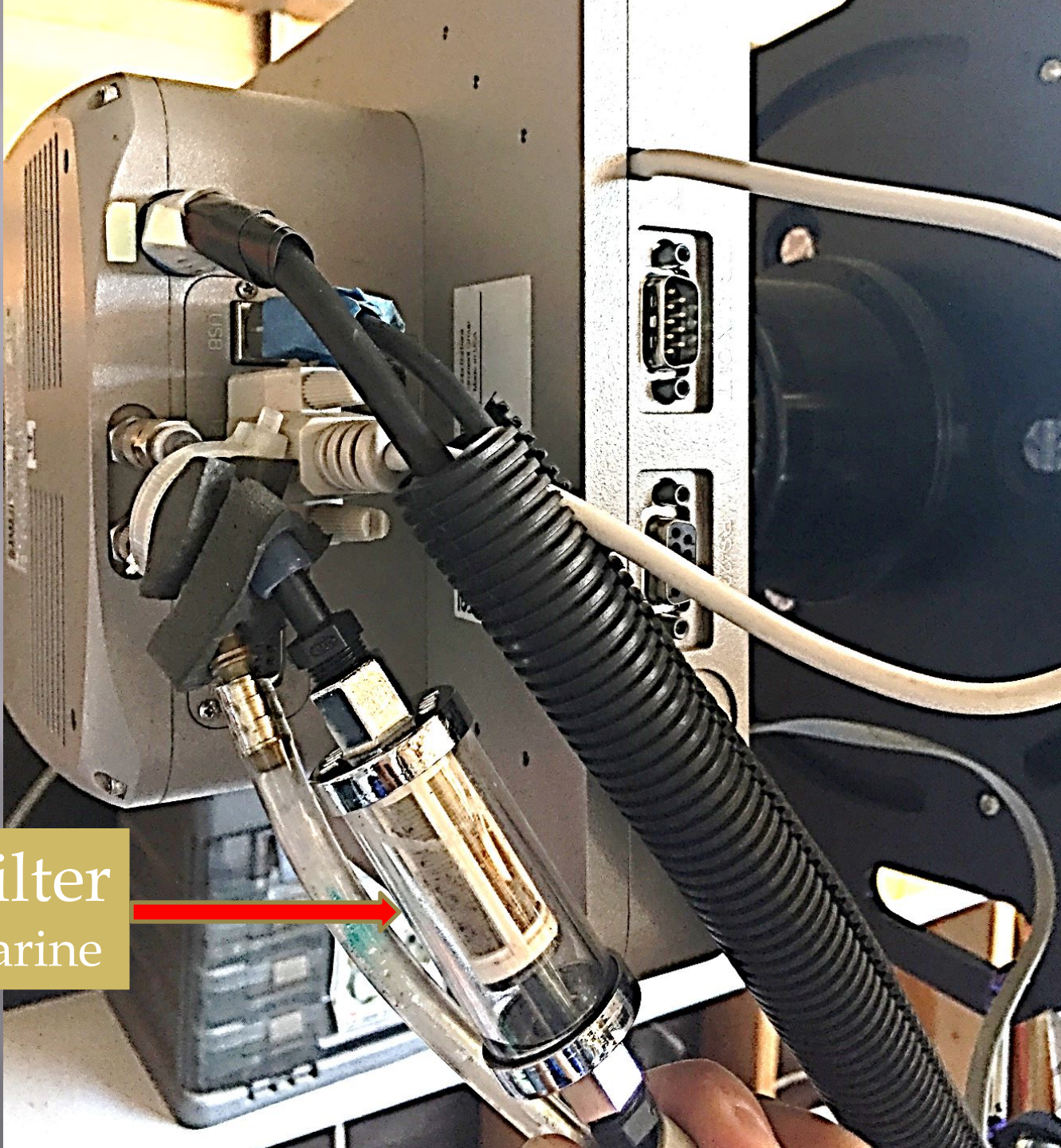


HEPA Air Filter





Secondary
Dew Heater



Fuel Filter
West Marine

A black plastic fountain pump is placed inside a red plastic bucket. The pump has a brass fitting on top, which is connected to a clear plastic tube. A black corrugated hose is also connected to the pump. A yellow zip tie is attached to the bucket's rim. The pump's label includes the following text: "GFCI PROTECTS AGAINST SHOCK", "Intertek", "UL", "120V 60Hz 0.5A", "1.5LPM", "1.5W", "1.5A", "1.5V", "1.5A", "1.5V", "1.5A", "1.5V", "1.5A".

Fountain Pump

MOAG



ambient $\angle 67^\circ$
In -2dC



Anza Checkout

Turn down refrigerator to 3-4

Turn off AC, fans, etc.

Close blinds

Remove water pump

Turn off scope power

Secure roof

Cover scopes

Shut down computes

Turn off keyboards and trackballs

Turn off speakers

Unplug battery chargers

Vacuum

Lock outside boxes

Take out garbage

Turn off all lights

Current Setup

- 12" TPO RC – STL1000M LRGB-SuHaO3
 - Ultrastar on MOAG for guiding
 - Microtouch focuser
- Takahashi E-180 – QSI683wsg LRGB-SuHaO3
 - STi in Borg 45ED guidescope
 - Robofocus
- 2 desktop computers with dual 24" monitors, track balls and backlit keyboards
- Software
 - MaximDL for Camera Control
 - SkyX for telescope control and plate solves
 - PHD2 for guiding
 - Focus max for focusing
 - CCDNavigator for session planning
 - CCDStack for provisional processing
 - Everything backed up on USB hard drive
 - **CCDAutopilot 5 for master control**

Current Images TPO - STL11K



Current Images E-180 – QSI 683

